

All Saints Parish Church
Kirkgate
Otley
LS21 3HW



Correspondence and General Enquiries to The Church Office: The Chestnuts Burras Lane
Otley LS21 3HS

Email: info@otleyparishchurch.org

Telephone 01943 465927

Website: www.otleyparishchurch.org

Second Edition - June 2018

The Stained Glass Windows of Otley Parish Church



A man who looks on glass,
On it may stay his eye,
Or if he pleaseth through it pass,
And then the heavens espy.

From 'The Elixir' by George Herbert
(1593 -1633)

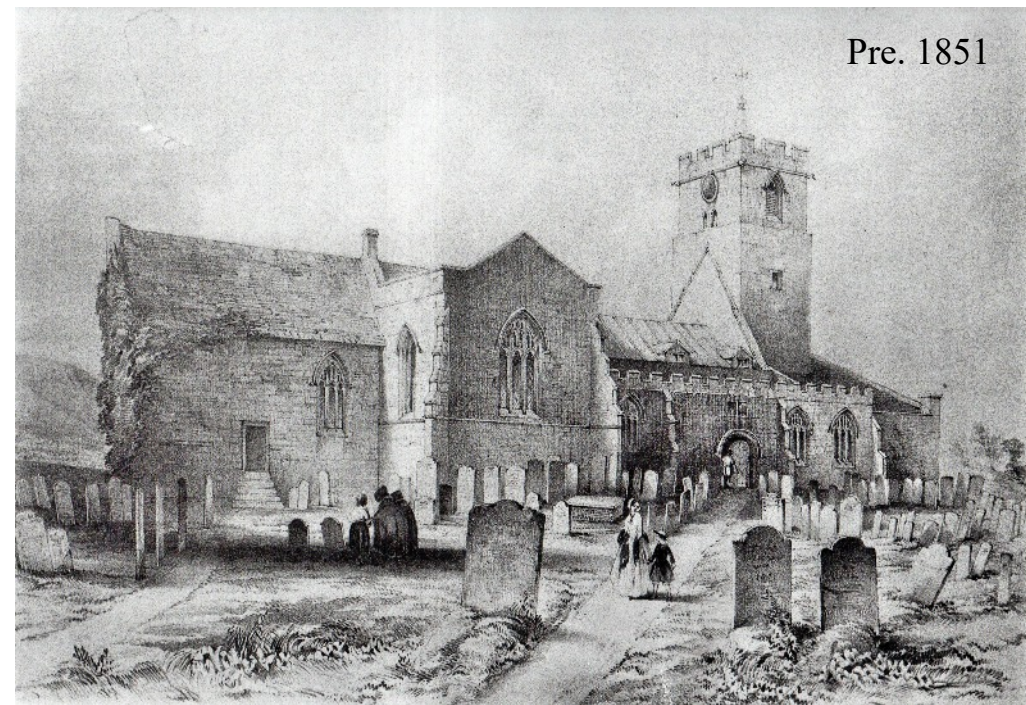
Welcome to Otley Parish Church

We hope you will find this Guide useful as you walk around.

We are sorry but there will be occasions when access to see the windows in the Parish Room will not be possible. Come back for a coffee on Friday or Saturday mornings between 10am - 12 noon and enjoy them at leisure.

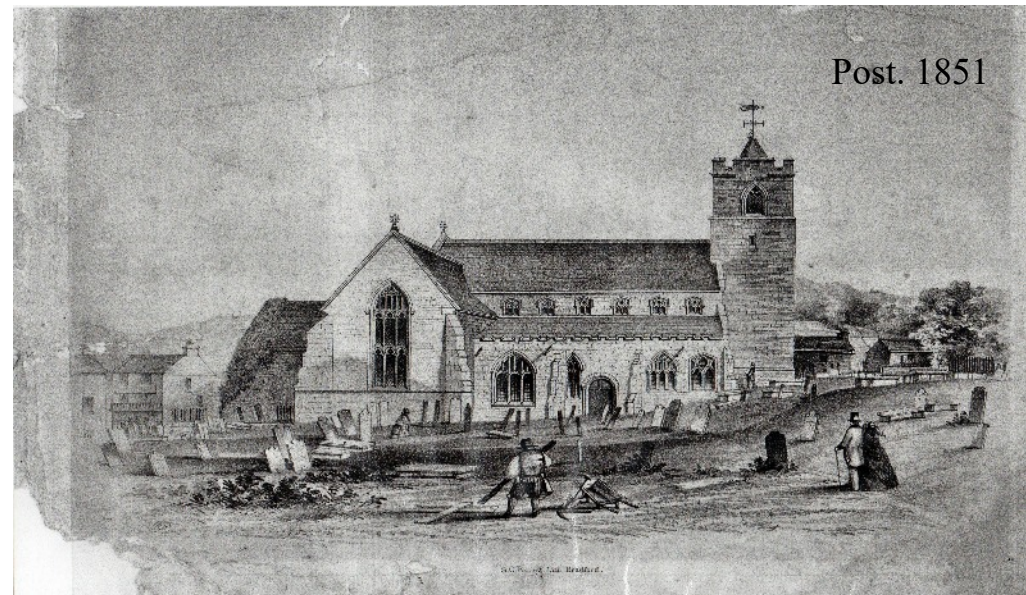
If you would like to take this guide away and wish to make a small donation for it there is a safe box in the wall beside the North entrance.

Thank you for visiting our church



Pre. 1851

These views of the church, can be dated as pre 1851 top view and post 1851 bottom view. Spot the differences. In the top one you can see a door now missing from the Chancel and ghost markings on the tower of a former steeper roof, probably thatched.



Post. 1851

In the bottom view the clerestory (pronounced as clear story) windows have been inserted, there is a tiled roof and houses are visible on Burras Lane. It is around this time that our stained glass windows were being inserted.

15. THE PARISH ROOM AGAIN

More Baptisms

Here there are three baptism scenes.

(Acts Chapter 8
Verses 26 to 40)

On the left we see
Philip with the man
from Ethiopia.

(Mark Chapter 1
Verses 9 to 11)

Jesus is baptised in
the river Jordan by
John the Baptist.

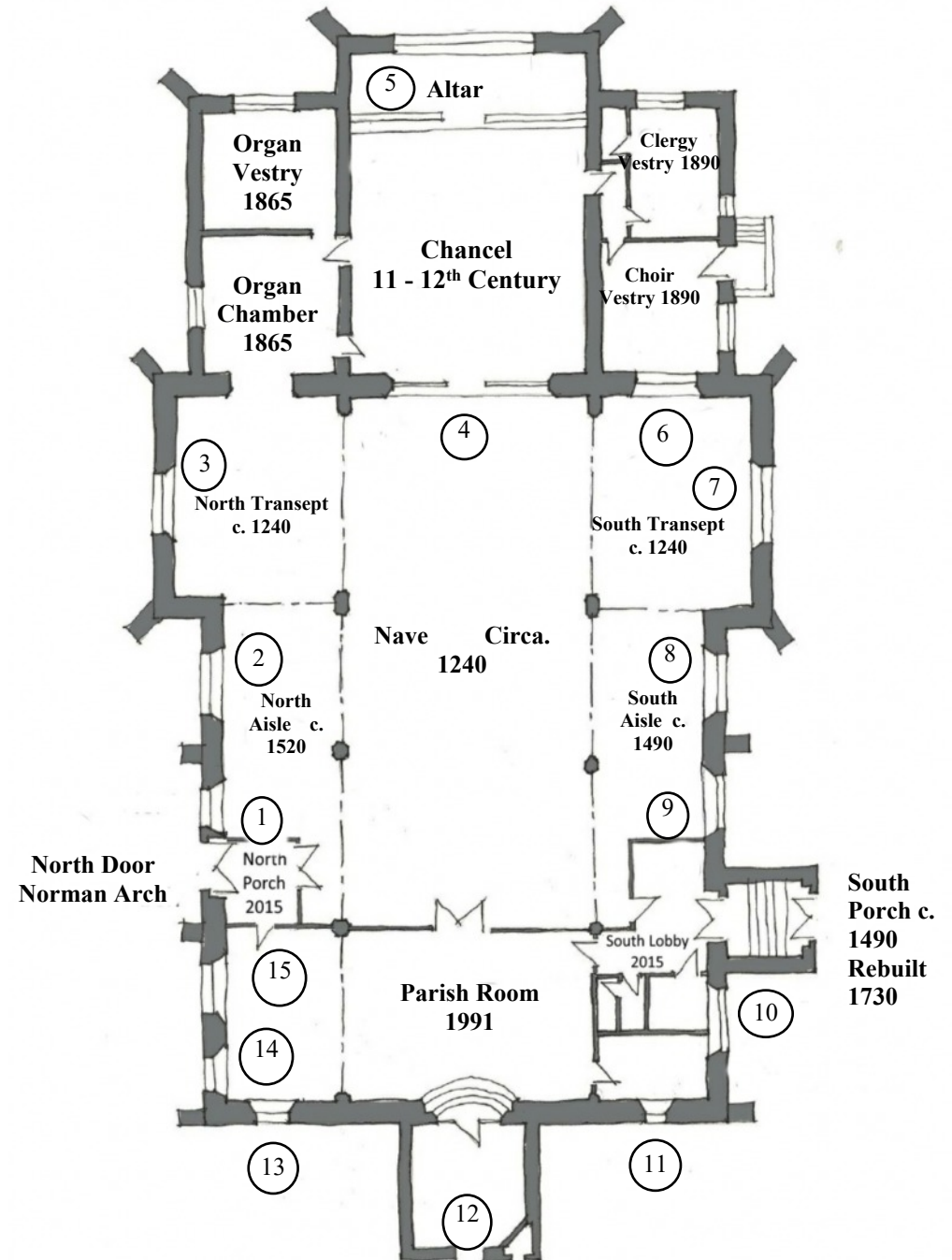
(Acts Chapter 10
Verses 24 to 48)

Then we see another
picture of Peter
baptising Cornelius,
with his friends and
family.



This window was manufactured by Clayton and Bell and inserted in 1873. It was also provided by public subscription in memory of the Reverend. Joshua Hart.

All Saints' Church, Otley



1. NORTH AISLE WINDOW

The first window in the north aisle, of plain glass, has stonework which dates from the 13th century and is the oldest window in the Parish Church. It would be moved from the original north wall of the nave to its present position when the north aisle was built in about 1530.

2. NORTH AISLE WINDOW

The scene in the left hand light depicts Christ in the carpenter's shop. In the front of a work bench and a red tiled shed the Holy Family are at work.

(Luke Chapter 2 Verse 51)

The centre light depicts Christ surrounded by children. Christ sits on a throne with hands outstretched to bless and embrace five children who gather round him.

(Mark Chapter 10 Verses 16)

The scene in the right hand light shows Christ with the elders in the Temple.

(Luke Chapter 2 Verses 46 to 48)

This window was inserted in 1862 and manufactured by Clayton and Bell. It was donated by Francis Billam of Newall Hall ' *in memory of a beloved child who was reclaimed by Him who gave her* '.



14. PARISH ROOM

Two Baptisms

(Acts Chapter 16 Verses 25 to 34)

When this window was inserted this space was the site of the Baptistry so it is no surprise to see stories of Biblical baptisms reproduced.

In the left light Peter was baptising Cornelius, a Roman centurion of an Italian regiment, in his home in Caesarea. Cornelius, a religious man was told by an angel to send for Peter Read Acts 10 for more of this fascinating story.

To the right we see Paul who, with Silas, was imprisoned because of their preaching in Macedonia. An earthquake during the night led to the conversion of the jailor, who with his family were baptised by Paul.

The window was inserted in 1873 and manufactured by Clayton and Bell. It was funded by public subscription in memory of Reverend Joshua Hart, who died in 1865. He was former vicar of Otley Parish Church.



13. PARISH ROOM

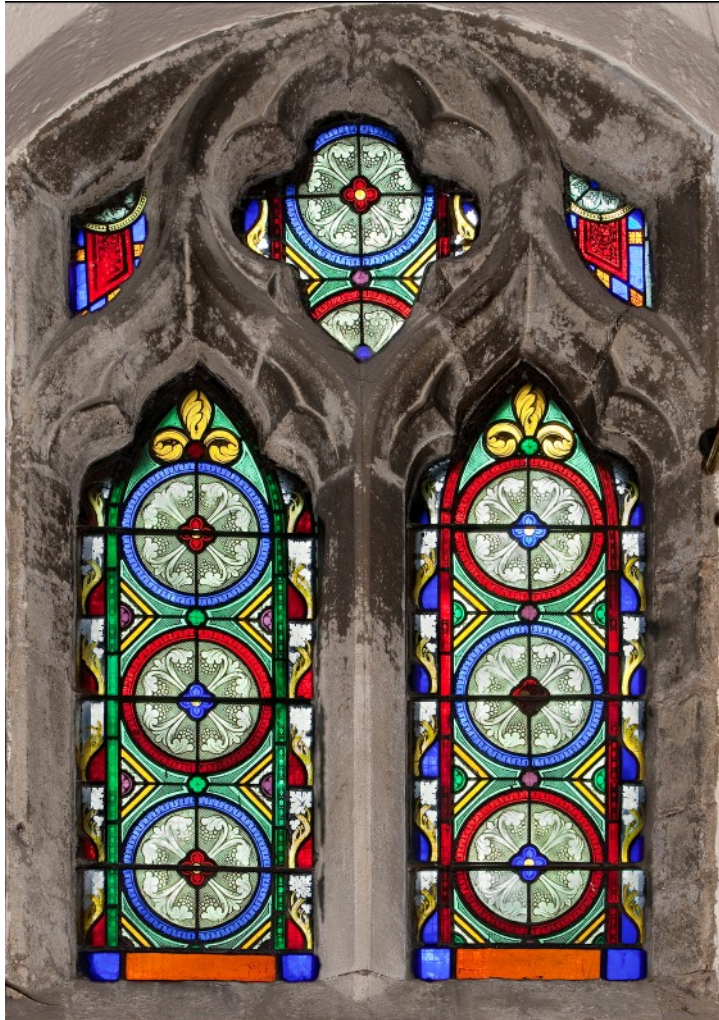
This window is very different from the rest.

It doesn't tell us a story at all.

It has been described as being 'of typical Victorian domestic style'.

Others have suggested it is of Pre-Raphaelite design.

The window is simply dated as mid 19th century and may have been made by Pilkingtons of St Helens.



It was given by a former vicar Reverend Joshua Hart

3. NORTH TRANSEPT

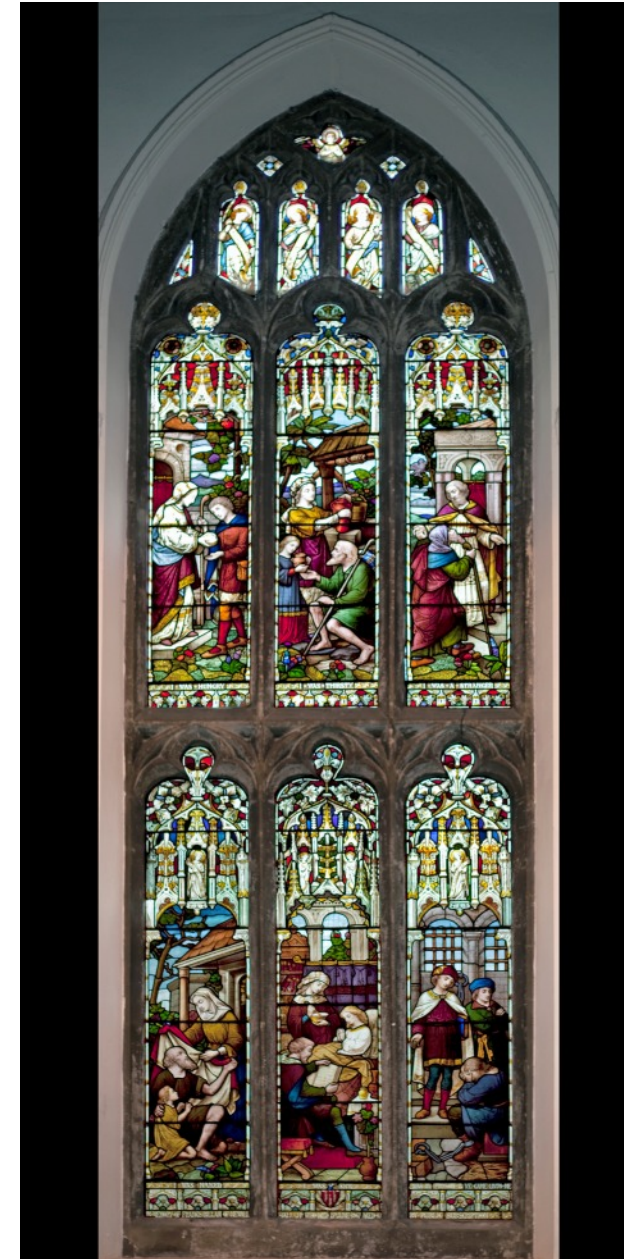
The Matthew Challenge

'For I was hungry and you gave me something to eat. I was thirsty and you gave me something to drink. I was a stranger and you invited me in. I needed clothes and you clothed me. I was sick and you looked after me. I was in prison and you came to visit me.'

(Matthew Chapter 25 Verses 35 to 36)

The King will reply: 'I tell you the truth. Whatever you did for one of the least of these brothers of mine, you did for me.'

(Matthew Chapter 25 Verses 40)



This window was inserted in 1869 and was manufactured by Ward and Hughes. It was paid for by public subscription in memory of Francis Billam of Newall Hall who died on June 15th 1867 aged 67. The heraldry at the bottom of the central light indicates that the family's ancestors fought at the battle of Agincourt in 1415.

4. THE WINDOW ABOVE THE CHANCEL SCREEN

The main lights of this window depict Faith, Charity and Hope.

(1 Corinthians Chapter 13 Verse 13)

The window was inserted in 1851 and is the oldest stained glass window in the Church. It is the work of Michael O'Connor.

It was donated by the Butler family of Baildon – ‘sacred to the memory of George and Elizabeth, natives of this parish given by their loving granddaughter Mary Jane Butler 1851’.



The ancient Ecclesiastical Parish of Otley comprised the chapelries of [Baildon](#), [Bramhope](#), [Burley-in-Wharfedale](#), [Denton](#), and [Farnley](#), also the townships of [Esholt](#), [Hawksworth](#), [Lindley](#), [Menston](#), [Newall with Clifton](#), [Pool-in-Wharfedale](#) and [Little Timble](#). This is why we find memorials and dedications from families in places like Burley-in-Wharfedale and Baildon.

12. THE TOWER

Paul and Moses

(Acts Chapter 9 Verses 1 to 18)

Hidden away we see two important men - Moses, the Old Testament leader, whose story we read in (Exodus Chapter 24) and Paul, of New Testament history.

Moses, on the left, is seen carrying tablets of stone engraved with the Ten Commandments, as written in Exodus Chapter 20 Verses 1 to 17, still pertinent today.

We see Paul, called Saul prior to his conversion on the road to Damascus, carrying a book and sword. The book symbolises Paul's writings he wrote much of the New Testament and was a great missionary. The sword refers to the means of his death; he was beheaded.



The window was inserted in 1885, manufactured by Clayton and Bell. It was a gift from William Fison of Burley who also gave us the Chancel screen and the doors to the Parish room. The doors were originally the entrance to the tower.

11. SOUTH PORCH UPSTAIRS – LADIES TOILET

(Yes gentlemen – you may go in and have a look at the window!)

Most appropriately for its situation we see two ladies each talking with a child.

Elizabeth

(Luke Chapter 1 Verses 5 to 23)

Elizabeth, a relative of Jesus' mother Mary, had her son late in life - he was known as John the Baptist. She is pictured on the left with a child seated on a stool in front of her.

Dorcas

(Acts Chapter 9 Verses 36 to 40)

Dorcas on the right, and also known as Tabitha, was a seamstress described as always doing good and helping the poor. When she died Peter knelt and prayed and she was restored.



The window was inserted in 1879 and manufactured by Michael O'Connor. It is the third of three windows given by the Hartley family. This one is in memory of Anne, wife of Thomas, who died in 1843 aged 38 years and of William Brown and Anne, their children who died in infancy.

5. THE EAST WINDOW

The East Window is one of the glories of Otley Parish Church. It is seen at its best when the sun rises and shines through it early in the morning and on dark nights when the inside lights illuminate it for the people in the streets. It remains a strong reminder of the Gospel story.

In the centre is the image of Christ, highly appropriate for a Church whose motto is "A place for everyone, with Christ at the centre". Below the figure of Christ is a silver pelican in piety with four young ones on a red base with a green background, a symbol of Christ's sacrifice. A scroll underneath bears the words 'Est deo Gra' – Thanks be to God – and 'I am the Resurrection and the life'. Christ is flanked by the four Gospel writers Matthew, Mark, Luke and John.

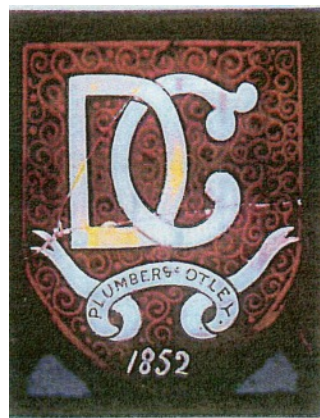


5. THE EAST WINDOW Cont.

The stonework, called tracery, which holds the glass in place dates back to 1495. The glass was made by William and Richard Pilkington of Pilkington of St Helens and was installed in 1852.

In the left bottom corner of the left hand light is a red shield with a monogram WRP and scroll with St Helens Lancashire in Roman capitals. The window was designed by Frank Howard and installed by a local man, David Chippindale. There is a shield in the bottom corner of the right hand light commemorating this. The window cost £150 - £14,650 at today's prices.

In 2001 the tracery was breaking up and an architect's report stated that an easterly gale could produce a disaster. Fund raising started to save the window. English Heritage gave a grant of £34,000 and £72,000 was raised by members of the Church and the wider public. Conservation work was carried out by Martin Johnstone of York and the window was rededicated by the Bishop of Bradford in 2005.



10. SOUTH PORCH – UPSTAIRS LANDING

The wedding at Cana

Jesus' first miracle

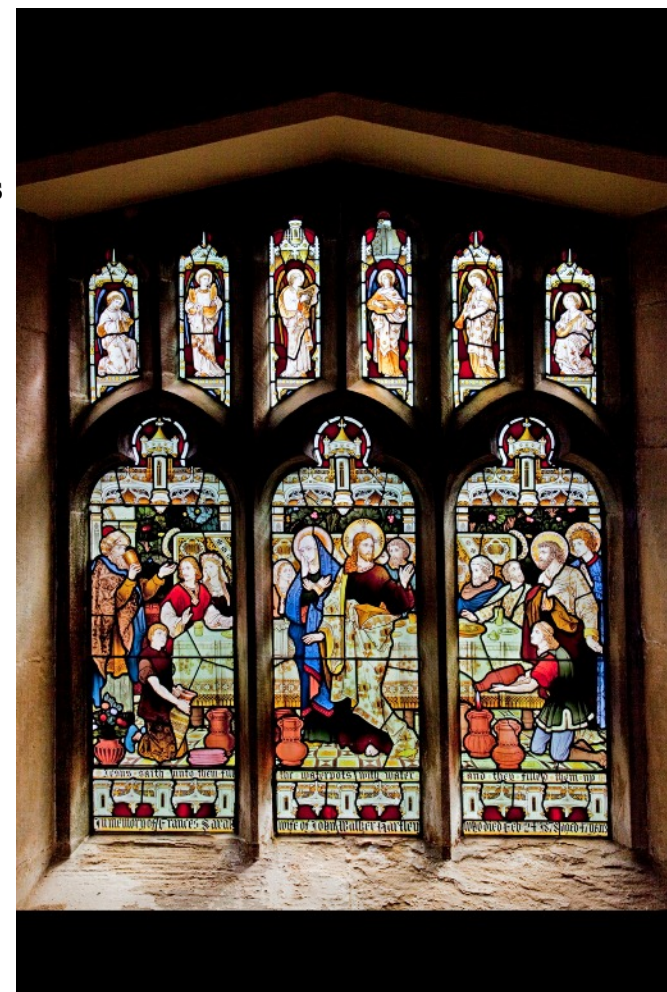
(John Chapter 2 Verses 1 to 12)

The three lights depict the wedding guests seated around the table.

The left light shows the Master of Ceremonies tasting the wine.

The centre light shows Jesus and his mother Mary.

The right light shows two guests, two disciples and a small boy pouring water from a jug.



The window was inserted in 1878 and manufactured by Heaton, Butler and Baine. One of three windows given by John Hartley and is in memory of his wife Frances Sara who died in 1878 aged 47 years.

9. SOUTH AISLE

Christ performing miracles

In each of the main lights Christ is depicted with long yellow hair and a beard with a golden cruciform nimbus.

The left hand light shows Jesus raising Lazarus from the dead (**John Chapter 11 Verses 1 to 44**).

The central light tells the story of Jesus bringing the daughter of Jairus back to life (**Luke Chapter 8 Verses 49 to 56**).

Jesus healing a paralyzed man is the subject of the light on the right hand side (**Matthew Chapter 9 Verses 1 to 8**).

In the tracery lights above the main lights there is an echo of the east window. Here again we see represented the four Gospel writers Matthew, Mark, Luke and John.

This window was inserted in 1869 and was manufactured by John Hardman. It was installed in memory of Robert Tennant of Kildwick Hall by their son John Tennant.



6. SOUTH TRANSEPT

The Resurrection

(**John Chapter 20 Verses 1 to 10**)

The centre light depicts Christ triumphant rising from the tomb. Beneath the figure of Christ is a sleeping soldier in front of the tomb. He wears 14th century armour with a gold tabard.

The left hand light shows three women looking on. The designer intended them to represent Mary Magdalene on the left, Jesus' mother Mary at the back and Mary Cleophas on the right but the Gospel writers differ about the number and identity of the women at the tomb.

The right hand light depicts St John and St Peter looking on at the empty tomb. (**John Chapter 20 Verses 1 to 10**)



This window was inserted in 1862 and was manufactured by Clayton and Bell. It was paid for by the children of Jonas and Betty Whitaker of Greenholme, Burley-in-Wharfedale. The window abounds with angels looking on at this miraculous event.

7. SOUTH TRANSEPT

The Crucifixion

(Mark Chapter 15 Verses 23 to 46)

The top three lights depict the crucifixion of Jesus. In the centre Jesus hangs on the cross. On the left are three women but again the Gospel writers differ about the number and identity of the women who witnessed the crucifixion. On the right the designer has St John, the good centurion and Joseph of Arimathaea witnessing the event.

The Nativity

Matthew Chapter 1 Verse 18 - Chapter 2 Verse 12

The bottom three lights depict the story of the birth of Jesus. In the centre Mary is seated and holds the infant Jesus on her knee with her left arm. Above Mary are two angels and above them the stable roof in brown with a star shining down in the centre. On the left of Mary are the magi and on the right the shepherds.



This window was inserted in 1862 and was manufactured by Clayton and Bell. It was donated by William Fison (see notes on 8) 'in grateful acknowledgement of God's mercies'.

8. SOUTH AISLE

Scenes from the life of Jesus

Matthew Chapter 5

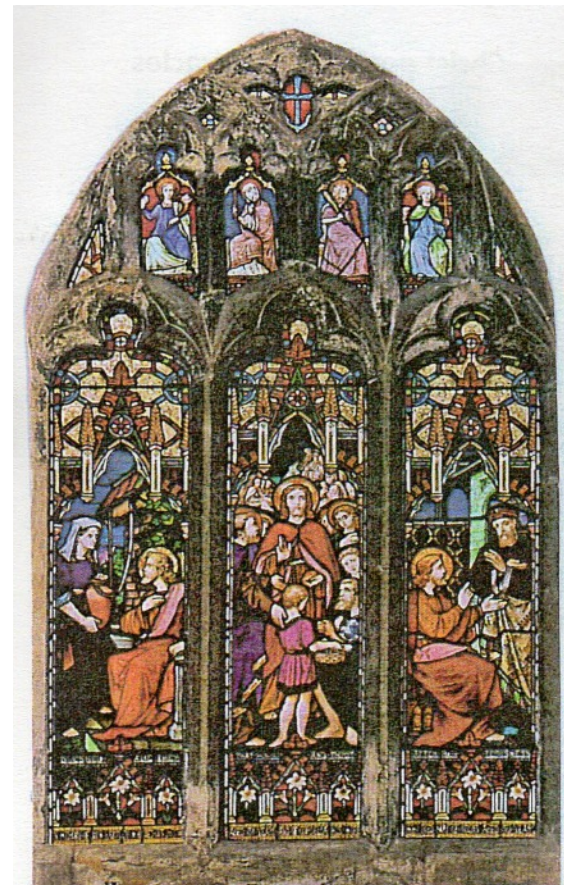
The main lights show scenes from the life of Christ.

The left hand light depicts the story of Jesus and the woman from Samaria at the well (John Chapter 4 Verses 1 to 30).

The central light depicts the story of Jesus feeding the five thousand (John Chapter 6 Verses 1 to 13).

The right hand light represents the story of Jesus instructing Nicodemus (John Chapter 3 Verses 1 to 31)

Above the three main lights are four tracery lights with a figure in each one. These four figures represent, from left to right, the four attributes - Charity, Humility, Fortitude and Faith.



Three panels from below the main lights in the window.



This window was inserted in 1869 and manufactured by Michael O'Connor. It was installed in memory of John and Cordelia Hartley of Ashfield House by their son. The name of the maker and the year of manufacture can be seen in the bottom right hand corner of the window.